

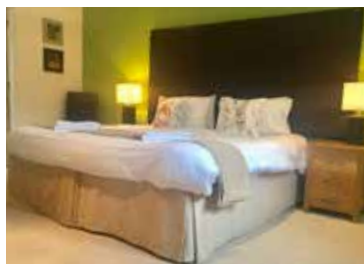


## Darwin Lake Hopton Cottage

4 Bedrooms  
Sleeps 8 guests

Hopton is a fantastic mid-sized stone cottage located at the centre of the Darwin Lake site. It's a great choice for larger group get togethers.

All 4 bedrooms feature 'zip and link' beds, which can be used as either 2 twin beds or 1 king sized bed, sleeping up to 8 guests in total. Thanks to the ground floor bedroom and accessible ground floor wet room and WC, Hopton Cottage is an excellent choice for visitors with limited or restricted mobility. Hopton Cottage includes a spacious open plan living, dining, and kitchen area, which has everything you need, such as a large fridge/freezer, washer/dryer, dishwasher, microwave, and TV with DVD player.



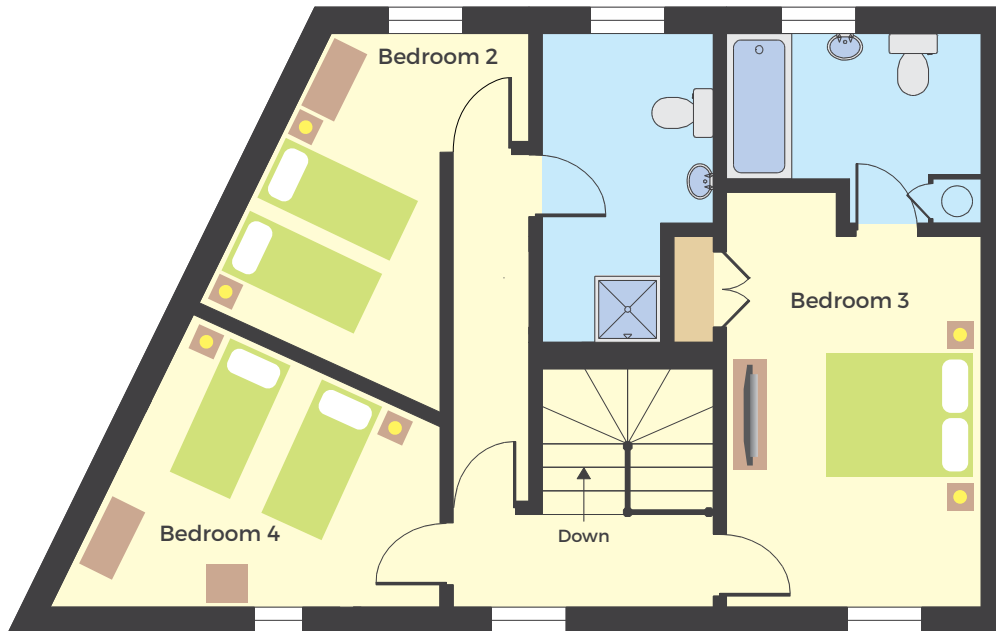
Prices are inclusive of linen, towels and electricity.  
(Zip and link beds can be made up as king size or twin.)

# Hopton Cottage

4 Bedrooms. Sleeps 8 guests



Ground floor



First floor

## Site plan



## Local amenities

The cottages at Darwin Lake make an excellent base for exploring the local area, which has a wide variety of activities, sights, and attractions to offer visitors of all ages. These include:

- Family-friendly theme parks including Alton Towers; Gulliver's Kingdom is just 5 miles away
- The historic market towns of Ashbourne and Chesterfield, packed with fascinating shops and great eateries
- Stately homes that have been the inspiration for our own cottages, such as Haddon, Hardwick, and Chatsworth
- Plenty of adrenaline-pumping outdoor pursuits in the nearby Peak District, like walking, cycling, and climbing

You'll find all this - and much more - right on your doorstep when you stay at Darwin Lake!