



## Darwin Lake Hassop Cottage

5 Bedrooms  
Sleeps 9 guests

Hassop Cottage is one of the largest cottages at Darwin Lake, with 2 king size bedrooms, 2 twin bedrooms, and 1 single bedroom, comfortably sleeping 9 guests.

3 bedrooms include en-suite facilities, with an additional shower/WC located on the ground floor. Hassop Cottage is centrally located within the Darwin Lake village, with easy access to all of the amenities. Spread across 3 floors, this cottage is ideal for large groups, and features a spacious, open plan kitchen/dining/living space that comes complete with fridge/freezer, washer/dryer, dishwasher, microwave, and TV with DVD. One bedroom with separate shower room is found on the ground floor.

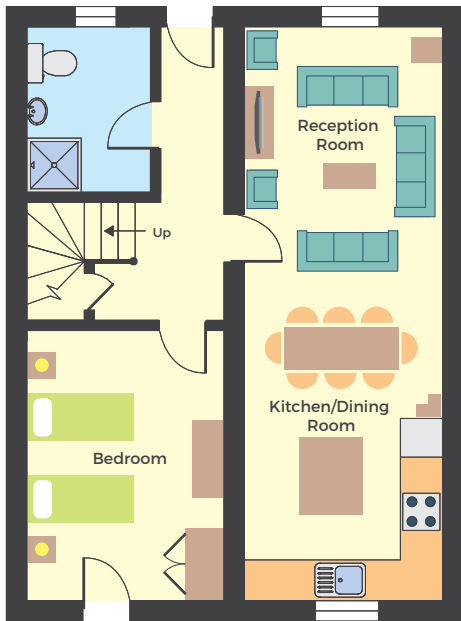


Prices are inclusive of linen, towels and electricity.  
(Zip and link beds can be made up as king size or twin.)

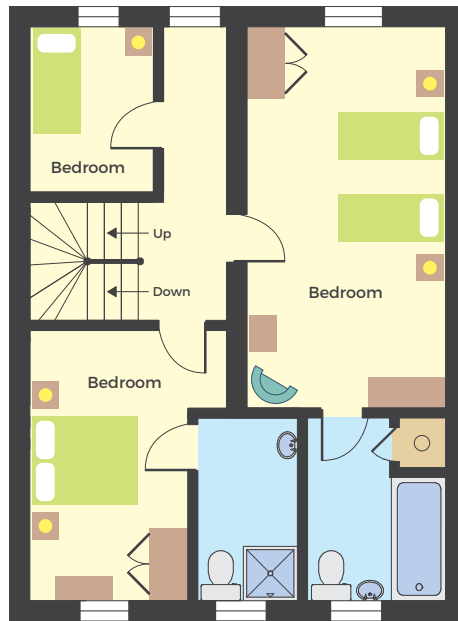
# Hassop Cottage

5 Bedrooms. Sleeps 9 guests

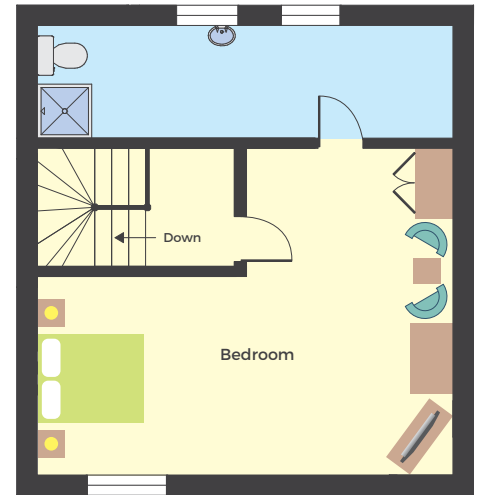
## Site plan



Ground floor



First floor



Second floor

## Local amenities

The cottages at Darwin Lake make an excellent base for exploring the local area, which has a wide variety of activities, sights, and attractions to offer visitors of all ages. These include:

- Family-friendly theme parks including Alton Towers; Gulliver's Kingdom is just 5 miles away
- The historic market towns of Ashbourne and Chesterfield, packed with fascinating shops and great eateries

- Stately homes that have been the inspiration for our own cottages, such as Haddon, Hardwick, and Chatsworth
- Plenty of adrenaline-pumping outdoor pursuits in the nearby Peak District, like walking, cycling, and climbing

You'll find all this - and much more - right on your doorstep when you stay at Darwin Lake!